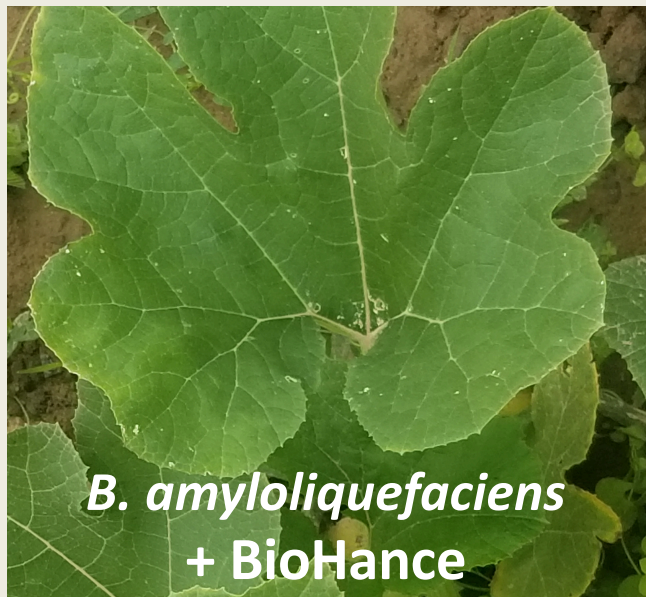
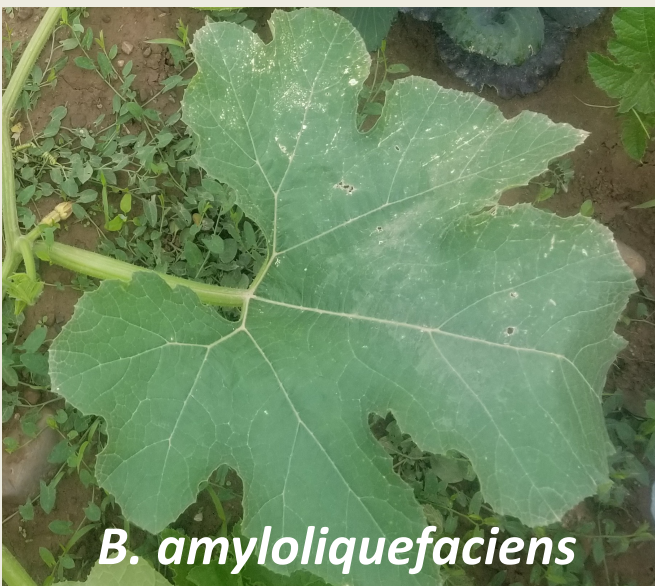




We create chemistry

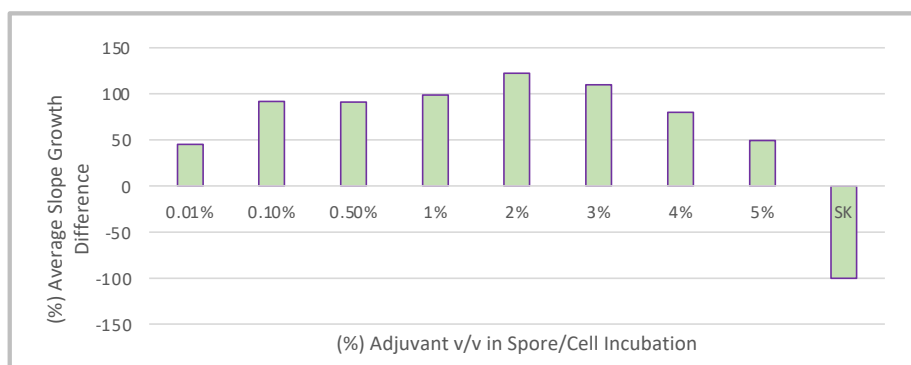
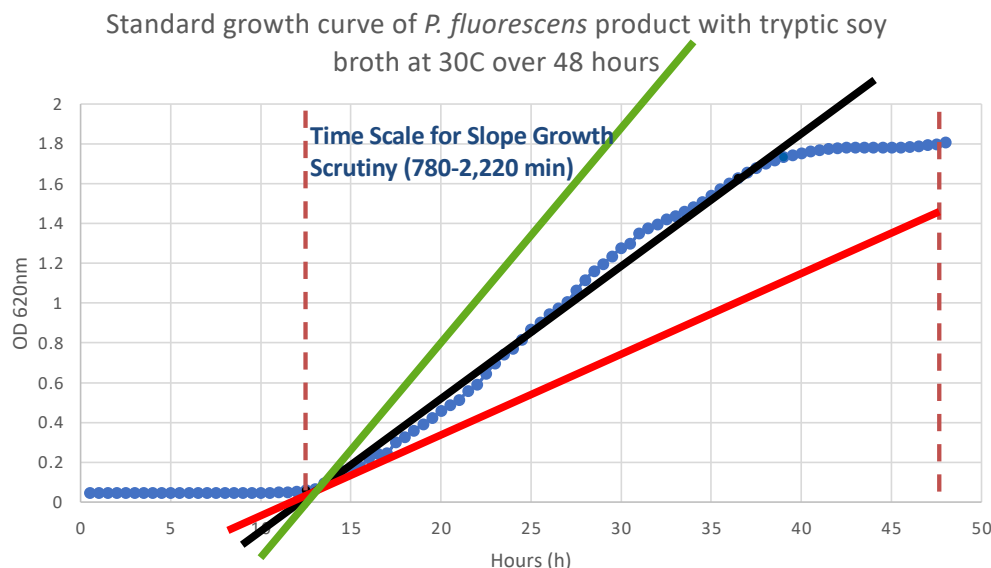
Agnique® BioHance Adjuvants for Biorational Organisms

BPIA Annual Meeting, May 2022



**Pumpkin
vs.
Powdery Mildew**

Interpretation of the adjuvant screening assay



Internal

- **Compatible Additives** are essentially neutral with respect to the rate of growth. Any slope change $\pm 25\%$ is treated as neutral (natural biodiversity of organisms)
- **Antagonistic Additives** reduce the rate of growth of the organism ($>25\%$ reduction) essentially inhibiting the metabolic processes of cell germination/division.
- **Adjuvant Additives** increase the rate of growth of the organism ($>25\%$ increase) typically increasing Colony Forming Units (CFU) ten-fold.

BASF

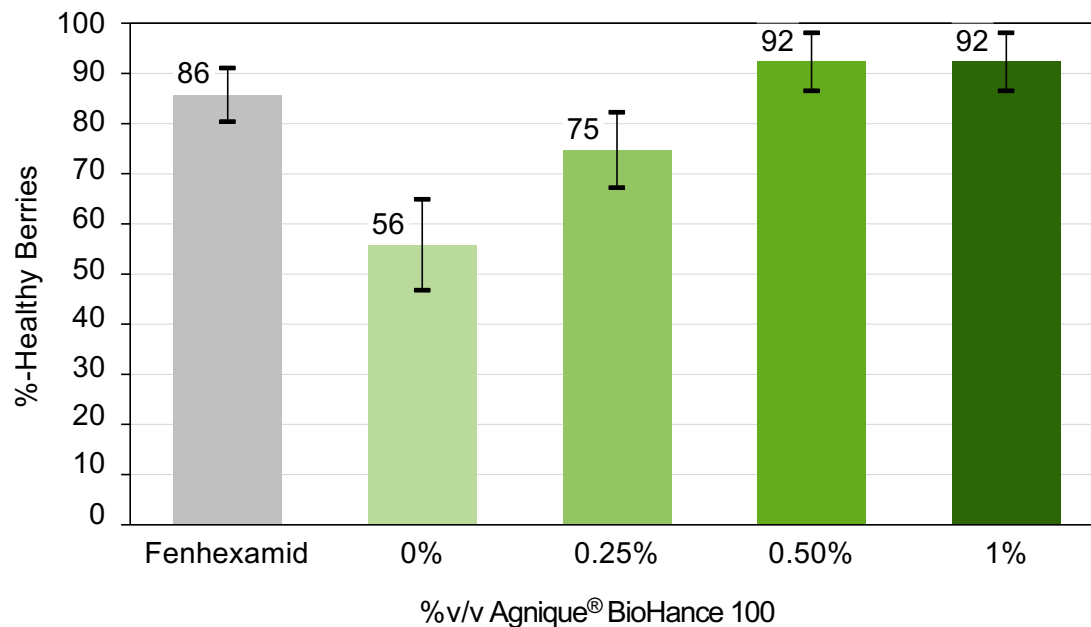
We create chemistry

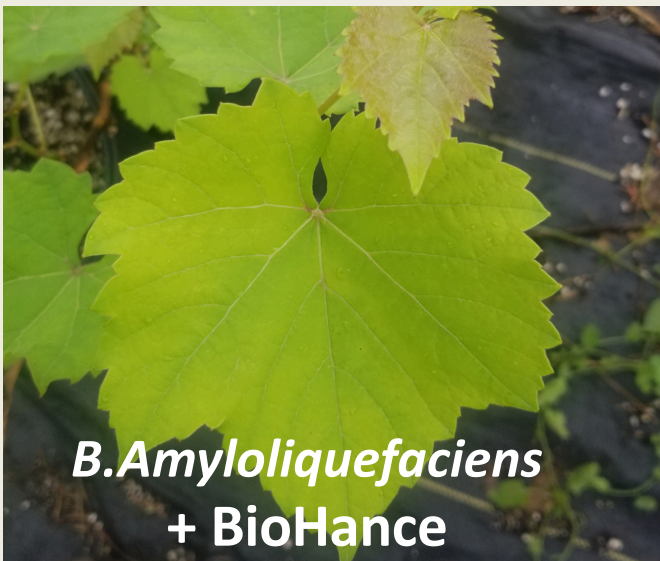
Agnique® BioHance 100 control of Strawberry Gray Mold with *B. amyloliquefaciens* (New York)

Control of Strawberry Gray Mold (*Botrytis cinerea* – High Pressure)

Trial Time Period	April/ May 2020
Spray Volume	100 gal/a (930 L/ha)
Elevate® 50 WDG Fungicide	24 oz/a (1.68 kg/ha)
Serifel® Biofungicide	(WP) 8 oz/a (563 g/ha)
Replicate plots	4 (7 plants/plot)
Applications	4 (7-day interval)
Evaluation	5 Days after Harvest
Phytotoxicity	0

Agnique® BioHance 100 Treatment Rate Study





**Grapes
vs.
Downy Mildew**



We create chemistry

Disclaimer

This document, or any answers or information provided herein by BASF, does not constitute a legally binding obligation of BASF. While the descriptions, designs, data and information contained herein are presented in good faith and believed to be accurate, they are provided for your guidance only. Because many factors may affect processing or application/use, we recommend that you make tests to determine the suitability of a product for your particular purpose prior to use. It does not relieve our customers of the obligation to perform a full inspection of the products upon delivery or any other obligation. The claims and supporting data provided in this publication have not been evaluated for compliance with any jurisdiction's regulatory requirements and the results reported may not be generally true under other conditions or in other matrices. Users must evaluate what claims and information are appropriate and comply with a jurisdiction's regulatory requirements. NO WARRANTIES OF ANY KIND, EITHER EXPRESS OR IMPLIED, INCLUDING WARRANTIES OF MERCHANTABILITY OR FITNESS FOR A PARTICULAR PURPOSE, ARE MADE REGARDING PRODUCTS DESCRIBED OR DESIGNS, DATA OR INFORMATION SET FORTH, OR THAT THE PRODUCTS, DESIGNS, DATA, OR INFORMATION MAY BE USED WITHOUT INFRINGING THE INTELLECTUAL PROPERTY RIGHTS OF OTHERS. IN NO CASE SHALL THE DESCRIPTIONS, INFORMATION, DATA, OR DESIGNS PROVIDED BE CONSIDERED A PART OF OUR TERMS AND CONDITIONS OF SALE.

® = Registered Trademark of BASF in many countries

 **BASF**
We create chemistry