



Pesticide Product Registration, Workflow and Process



Presentation Outline

- Pesticide Registration Branch Workload
- Application Submission Workflow
- Pesticide Registration, Work Process
- CalPEST, Work Tool
- Discussion



A photograph of a yellow tractor in a green field under a dark, stormy sky. The tractor is on the right side of the frame, facing left. The field is filled with tall green grass. In the background, there is a line of trees. The sky is dark and cloudy, with a hint of blue on the right side. The overall mood is somber and dramatic.

Pesticide Registration Branch, Workload

NUMBERS BREAKDOWN WORKLOAD

- $\approx 12,000^+$ active products
- $1,400^+$ registered companies
- $1,000^+$ active ingredients



NUMBERS BREAKDOWN

WORKLOAD

- 4,000+ registration submissions per year
- A standard registration submission is:
 - a new product, 1,300+ submissions/year
 - Amendments, 2,000+ submissions/year
 - Other, 600+ submissions/year
- Annual CA Notice: [Pesticide Registration Program Annual Processing Timelines](#)

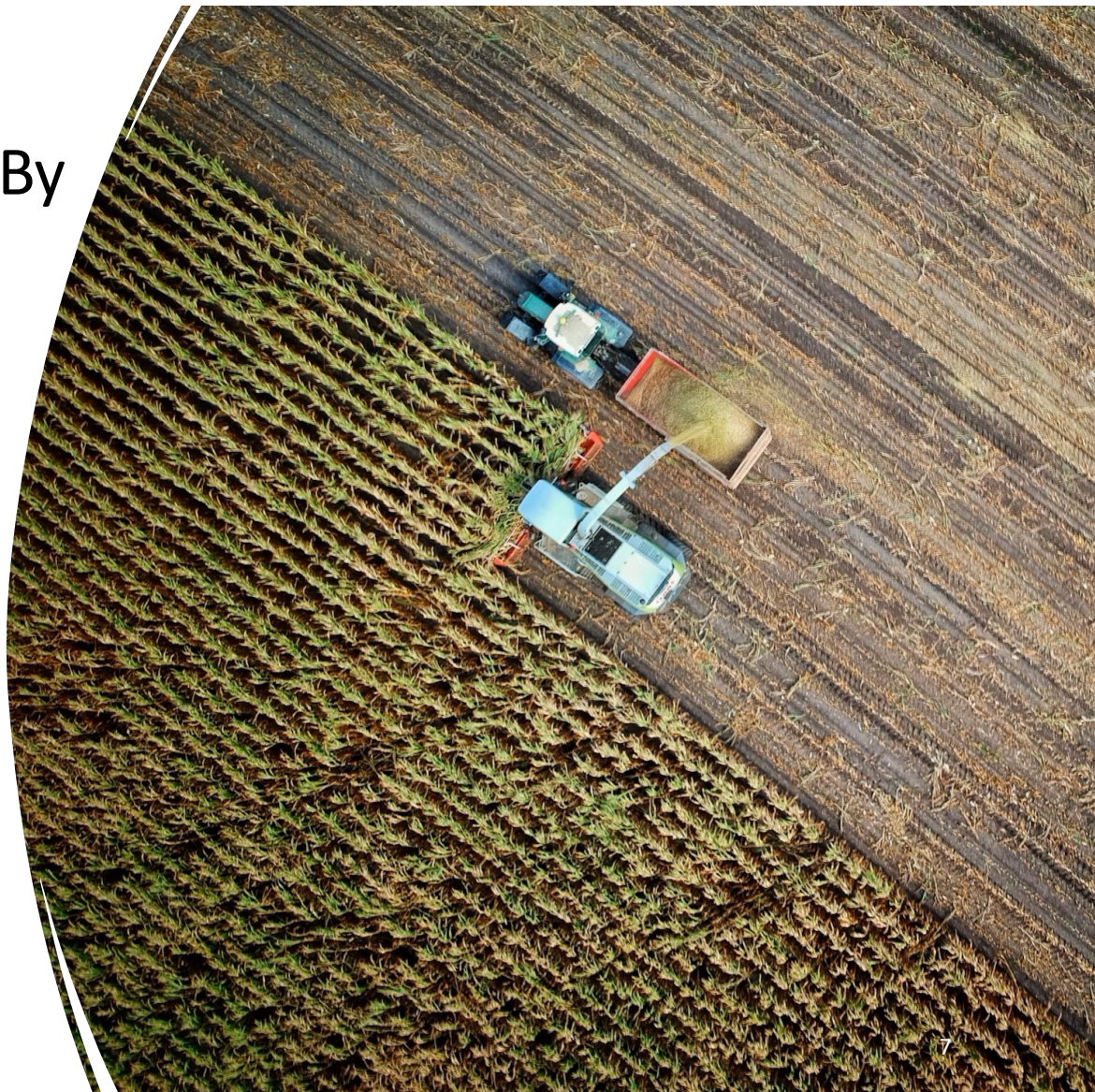


Application Submission, Workflow

Team-Based Assignments By Active Ingredient Workflow

- Four Regulatory Teams
- Each team is assigned specific active ingredients
- Application submissions assigned to specific tree team based on the predominant active ingredient in formulated product

[CA Notice 2024-02](#)





Tree Teams and Team Emails:

Team Redwood

PRB.Team.Redwood@cdpr.ca.gov

Team Oak

PRB.Team.Oak@cdpr.ca.gov

Team Cedar

PRB.Team.Cedar@cdpr.ca.gov

Team Maple

PRB.Team.Maple@cdpr.ca.gov

[Search for team assignment by Chemical Name, Code, or CAS Number](#)

Senior Environmental Scientist Roles

**Senior Environmental Scientists
are not on a tree team**

**Assist tree teams when time
allows**





Pesticide Registration, Work Process

BACKGROUND

Before coming to California...



Company Registration

- Most chemical companies (also referred to as registrants) must be registered with U.S. EPA
- U.S. EPA assigns each company a company number



Scientific Studies

- Companies develop scientific studies to show their product will perform as labeled, and the product won't cause adverse effects
- Strict rules and guidelines for data generation



Federal Registration

- Most products need to be federally registered by U.S. EPA before coming to California
- Some exceptions where California considers a product a pesticide, but U.S. EPA does not

INITIAL REVIEW, SPECIAL ASSIGNMENTS

Intake

- CalPEST receives the submission
 - Creates a unique identification number and automatically responds to the applicant relaying receipt of the submission and ID number

Ingredient Team

- This review is only required if there is a new or unknown active ingredient
- Enters chemical information in the Master Chemical System

Indexing Team

- This review is only required if the submission contains scientific studies
- Enter scientific study information into the Pesticide Data Index System

INITIAL REVIEW

Branch Chief

- This review is only required if the submission is requesting concurrent review
- The Branch Chief also grants expedites and priority reviews for submissions

Flag Review Team

- This review is only required if the active ingredient has a flag for additional review
- Example: Consult with a certain person or program if label contains certain use

Tree Team Assignment

- Team-Based Assignments By Active Ingredient
- Four Regulatory Teams
 - Team Redwood
 - Team Oak
 - Team Cedar
 - Team Maple

REGULATORY SCIENTIST REVIEW

Regulatory Scientists' review the application and coordinate assignments associated with the submission...



Accurate Submission

- Ensure application requirements are accurate
- Strict process for applicants to correct any deficiencies



Product Label

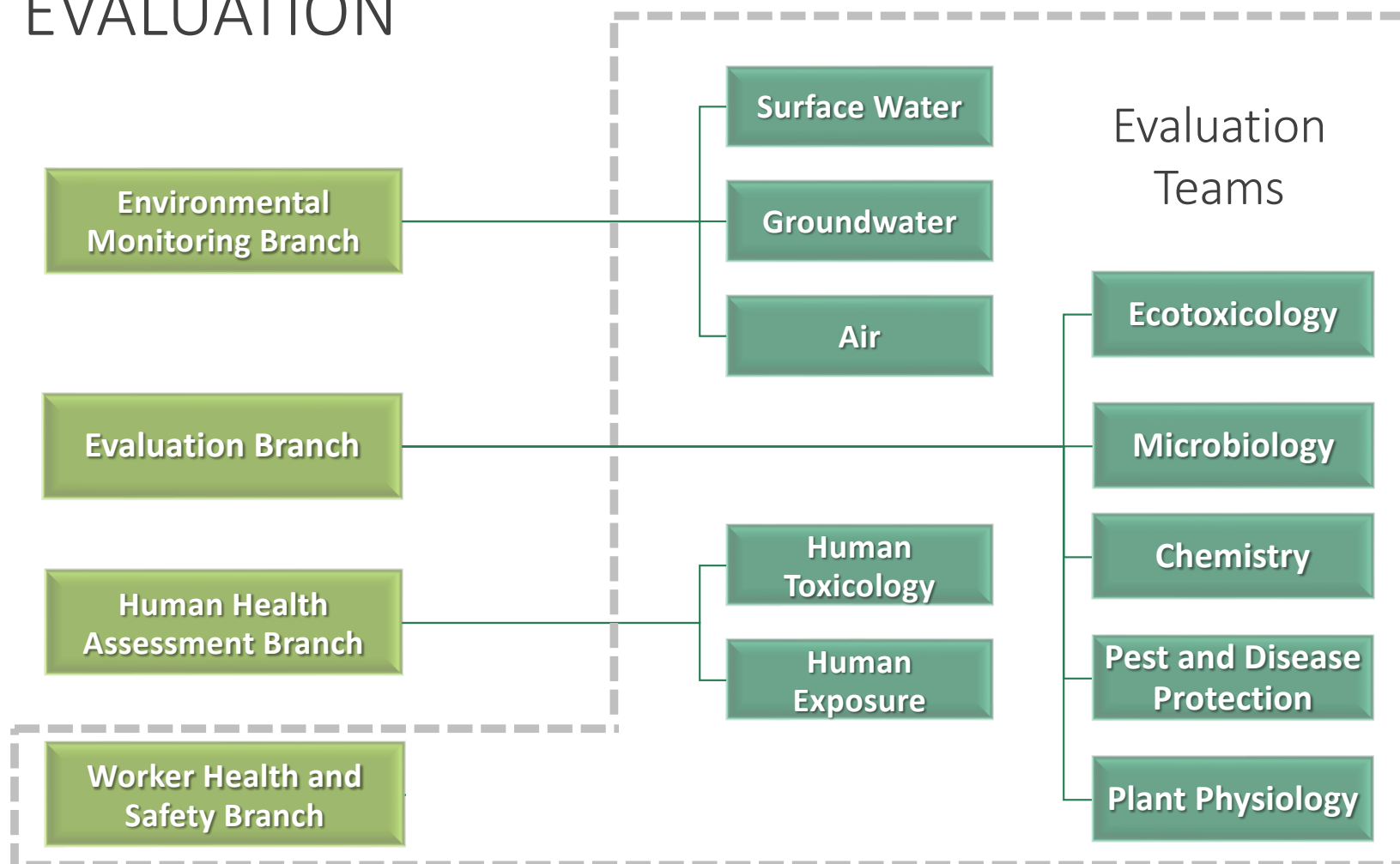
- Complex label requirements
- Determine compliance with requirements
- Verify product label matches the U.S. EPA accepted label



Evaluation Assignment

- Determine the evaluation teams needed based on the product label and/or scientific studies
- Notice is sent out to a public e-mail list known as the Materials Entering Evaluation

EVALUATION



EVALUATION



Dependencies

- Some evaluation teams depend on another evaluation team before conducting their review



Finding

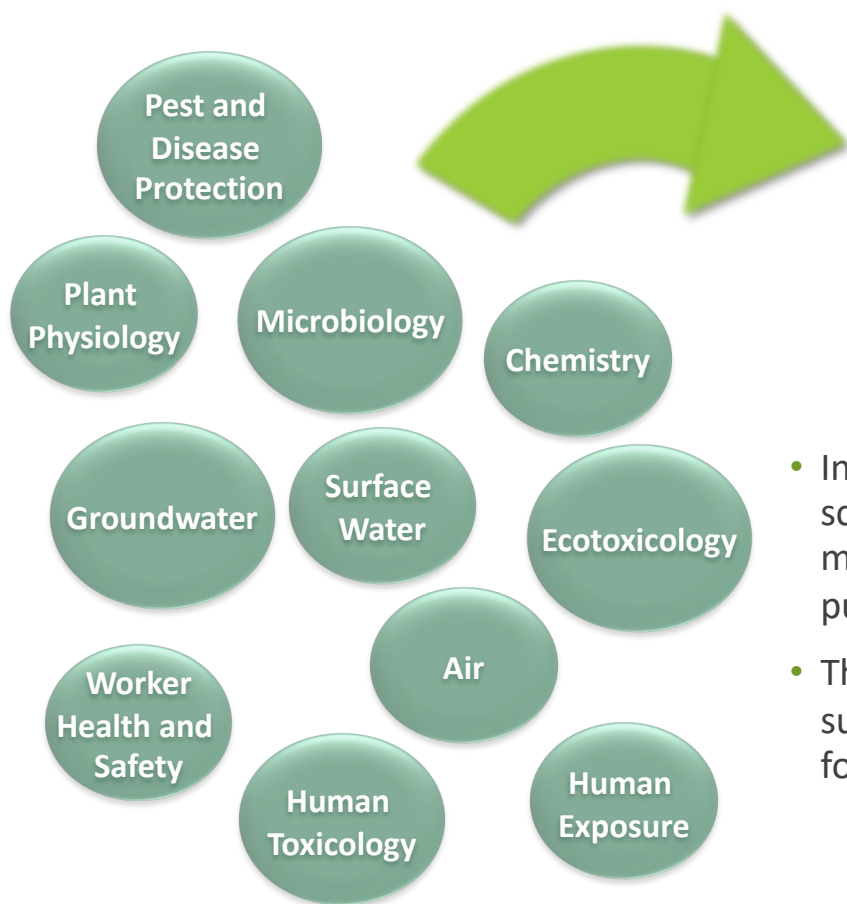
- Each assigned evaluation team will make a finding for the submission
- Finding is written up into a thorough scientific evaluation report



Approval

- Each scientific evaluation report is peer reviewed
- Each scientific evaluation report is approved by a supervisor
- At this point, the report is considered “Final Draft”

EVALUATION



Public Report

- Information from the scientific evaluation reports may be included in the public report
- This is only required if the submission will be posted for public comment



Manager Determination

- Registration Manager will make the final determination for the submission based on findings from the evaluation programs



Public Comment

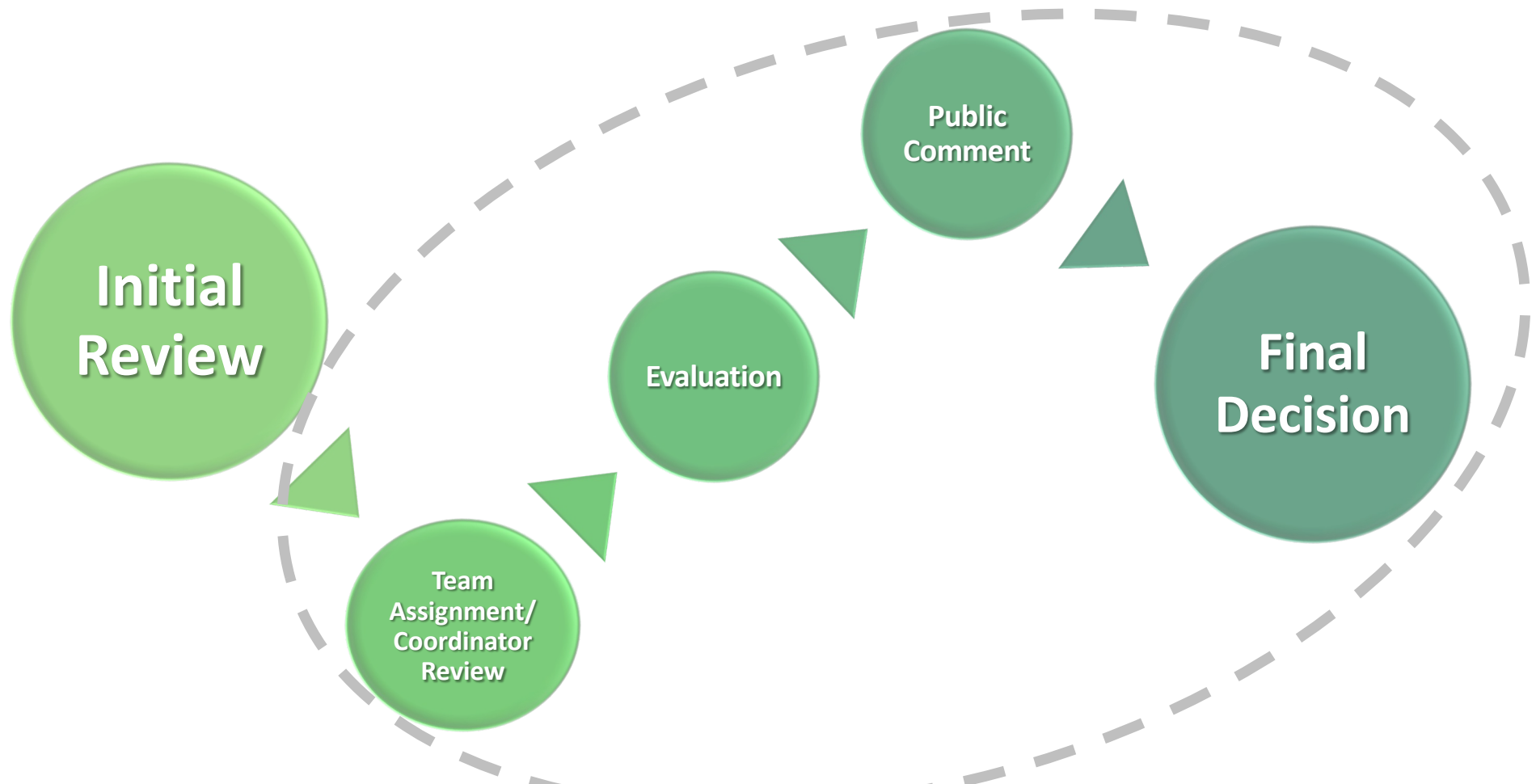
- Products that have gone through evaluation must be posted for public comment in the Notice of Decision for 30 days
- Must respond to public comments before the final decision



Final Decision

- If the decision is to register, generate the product license
- Licensing will enter the information into the Licensing Database
- Coding will enter the product label information into the Product/Label Database

OVERALL SUBMISSION WORKFLOW





CalPEST, Work Tool



California Pesticide Electronic Submission Tracking (CalPEST) Work Tool

What Registrants and Agents Can Do

- Renew licenses
- Pay renewal and application fees electronically
- Submit new product and amendment submissions
- Submit stand-alone data (e.g., adverse effects, reevaluation, etc.)
- Manage company changes
- Update and track the progress of your submissions

California Pesticide Electronic Submission Tracking (CalPEST) Work Tool

Statistics (as of March 27, 2025):

- 764 Registered External Users
- 70% of Registrants' have (at least) 1 user
- 53% of renewals paid electronically

1,700+ Active Submissions

[California Pesticide Electronic Submission Tracking \(CalPEST\)](#)

CalPEST@cdpr.ca.gov



Discussion